

*A Creative Approach to Music Fundamentals* by William Duckworth, 11<sup>th</sup> Edition  
Homework Chapter 9, Minor Key Signatures

\_\_\_\_\_ name, date

9-1

Identify the relative minor key for the following major keys.

- |                               |                                |
|-------------------------------|--------------------------------|
| 1. E major _____              | 8. A <sup>b</sup> major _____  |
| 2. D major _____              | 9. C major _____               |
| 3. G <sup>b</sup> major _____ | 10. B major _____              |
| 4. F major _____              | 11. F <sup>#</sup> major _____ |
| 5. C <sup>#</sup> major _____ | 12. D <sup>b</sup> major _____ |
| 6. G major _____              | 13. E <sup>b</sup> major _____ |
| 7. A major _____              | 14. B <sup>b</sup> major _____ |

9-2

Identify the major key and the relative minor key that have the given number of sharps or flats.

	<i>Major</i>	<i>Relative minor</i>
1. two flats	_____	_____
2. two sharps	_____	_____
3. three sharps	_____	_____
4. four flats	_____	_____
5. seven sharps	_____	_____
6. five flats	_____	_____
7. six sharps	_____	_____
8. three flats	_____	_____
9. one sharp	_____	_____
10. six flats	_____	_____
11. five sharps	_____	_____
12. one flat	_____	_____
13. four sharps	_____	_____
14. seven flats	_____	_____

9-3

Identify the relative major key for the following minor keys.

- |                               |                                |
|-------------------------------|--------------------------------|
| 1. F <sup>#</sup> minor _____ | 8. E minor _____               |
| 2. D minor _____              | 9. D <sup>#</sup> minor _____  |
| 3. A <sup>b</sup> minor _____ | 10. F minor _____              |
| 4. C <sup>#</sup> minor _____ | 11. B minor _____              |
| 5. A <sup>#</sup> minor _____ | 12. E <sup>b</sup> minor _____ |
| 6. G minor _____              | 13. C minor _____              |
| 7. B <sup>b</sup> minor _____ | 14. G <sup>#</sup> minor _____ |

Identify the minor keys represented by the following key signatures.

1.   
 \_\_\_\_\_

2.   
 \_\_\_\_\_

3.   
 \_\_\_\_\_

4.   
 \_\_\_\_\_

5.   
 \_\_\_\_\_

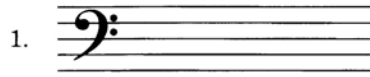
6.   
 \_\_\_\_\_

7.   
 \_\_\_\_\_

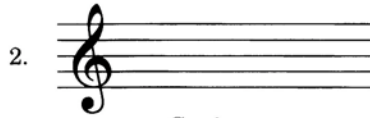
8.   
 \_\_\_\_\_

9-5

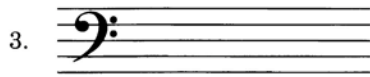
Write out the indicated minor key signatures, using sharps or flats as required.



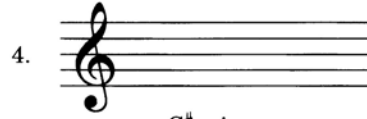
G minor



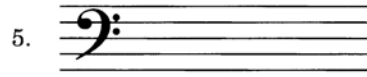
C minor



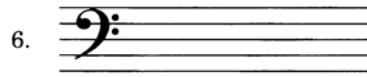
A<sup>b</sup> minor



C<sup>#</sup> minor

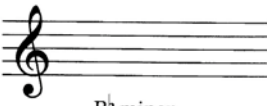


A minor



D<sup>#</sup> minor

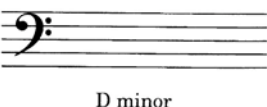
9-5 continued

7.   
B $\flat$  minor

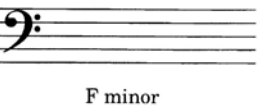
8.   
G $\sharp$  minor

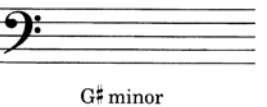
9.   
E $\flat$  minor

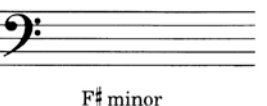
10.   
A minor

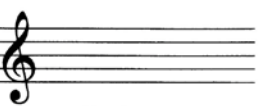
11.   
D minor

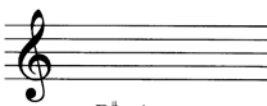
12.   
A $\sharp$  minor

13.   
F minor

14.   
G $\sharp$  minor

15.   
F $\sharp$  minor

16.   
B minor

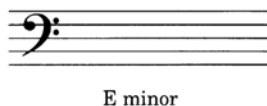
17.   
D $\sharp$  minor

18.   
C $\sharp$  minor


19.   
E minor

20.   
E $\flat$  minor

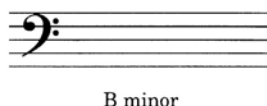
21.   
F $\sharp$  minor

22.   
E minor

23.   
F minor

24.   
A $\sharp$  minor

25.   
A $\flat$  minor

26.   
B minor