

*A Creative Approach to Music Fundamentals* by William Duckworth, 11th Edition  
 Homework Chapter 5, Pitch

\_\_\_\_\_ name, date

5-1

Locate the specified pitches on the following keyboards, and write each pitch in the correct place. If the pitch is a white key, write it directly on the keyboard. If it is a black key, use the answer line given above the keyboard. Then practice finding and playing each of the pitches at the piano.

1.  $F^\sharp$   
 $D^\flat$   
 $A^\sharp$   
 $E^\flat$   
 $F^\flat$

2.  $G^\flat$   
 $B^\flat$   
 $A^\flat$   
 $C^\sharp$

3.  $G^\sharp$   
 $D^\sharp$   
 $F^\sharp$   
 $A^\sharp$   
 $E^\sharp$

5-2

Identify the following pitches by letter name.

1.

\_\_\_\_\_

2.

\_\_\_\_\_

3.

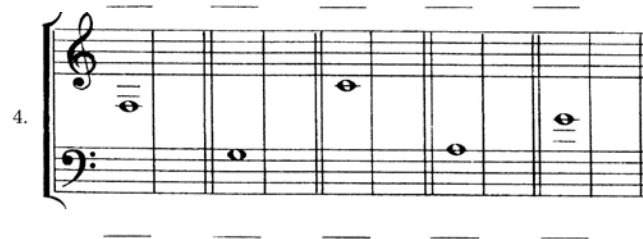
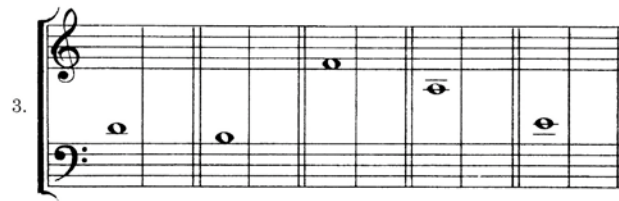
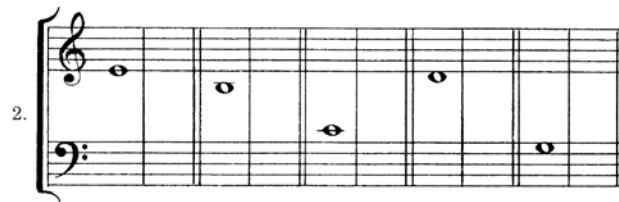
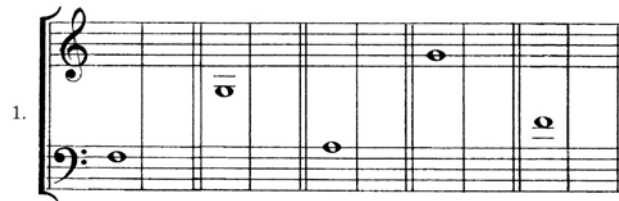
\_\_\_\_\_

4.

\_\_\_\_\_

First identify the given pitch; then rewrite the same pitch, but in the other clef. A keyboard is provided to help you visualize the pitches.

EXAMPLE:



5-4

Name the pitches given below. Then rewrite the passages using the octave sign to avoid the use of ledger lines.

1.

A musical staff in treble clef with seven notes on ledger lines above the staff. From left to right, the notes are: G<sup>4</sup> (first line), A<sup>4</sup> (second space), B<sup>4</sup> (third space), C<sup>5</sup> (fourth space), D<sup>5</sup> (first line), E<sup>5</sup> (first space), and F<sup>5</sup> (second space).

-----

2.

A musical staff in treble clef with seven notes on ledger lines below the staff. From left to right, the notes are: C<sup>3</sup> (first space), B<sup>2</sup> (first space), A<sup>2</sup> (first space), G<sup>2</sup> (first space), F<sup>2</sup> (first space), E<sup>2</sup> (first space), and D<sup>2</sup> (first space).

-----

3.

A musical staff in treble clef with seven notes on ledger lines above the staff. From left to right, the notes are: G<sup>4</sup> (first line), A<sup>4</sup> (second space), B<sup>4</sup> (third space), C<sup>5</sup> (fourth space), D<sup>5</sup> (first line), E<sup>5</sup> (first space), and F<sup>5</sup> (second space).

-----

4.

A musical staff in bass clef with seven notes on ledger lines below the staff. From left to right, the notes are: C<sup>3</sup> (first space), B<sup>2</sup> (first space), A<sup>2</sup> (first space), G<sup>2</sup> (first space), F<sup>2</sup> (first space), E<sup>2</sup> (first space), and D<sup>2</sup> (first space).

-----


5.


A musical staff in bass clef with seven notes on ledger lines below the staff. From left to right, the notes are: C<sup>3</sup> (first space), B<sup>2</sup> (first space), A<sup>2</sup> (first space), G<sup>2</sup> (first space), F<sup>2</sup> (first space), E<sup>2</sup> (first space), and D<sup>2</sup> (first space).

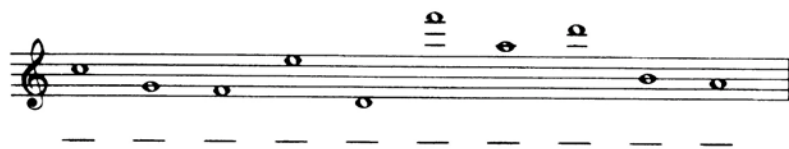
-----

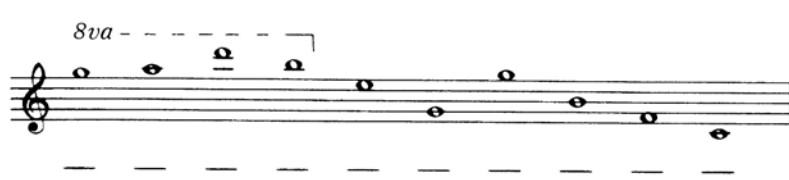
5-5


Give the correct name and octave identification for the following pitches.

1. 

2. 


3. 

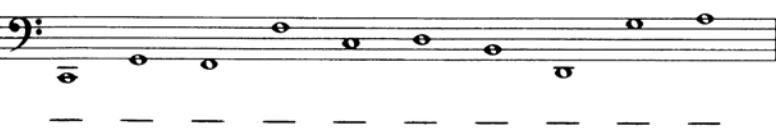
4. *8va* 


5. 

5-6

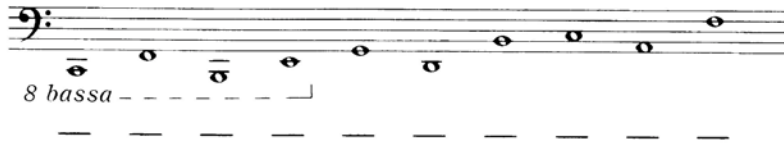
Give the correct octave identification for the following pitches in the bass clef

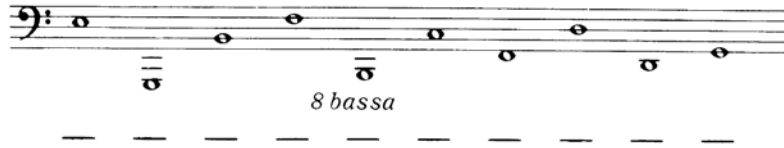
1. 

2. 

3. 

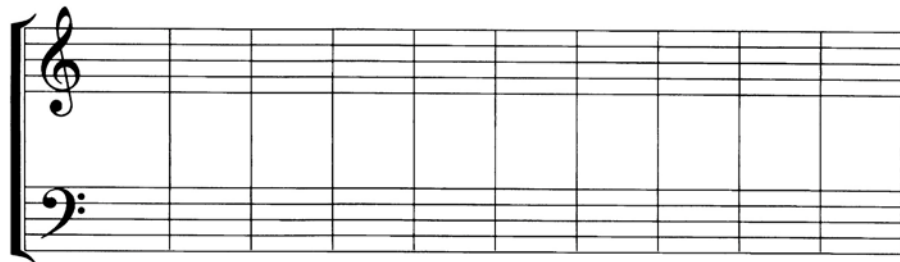
5-6 continued

4. 

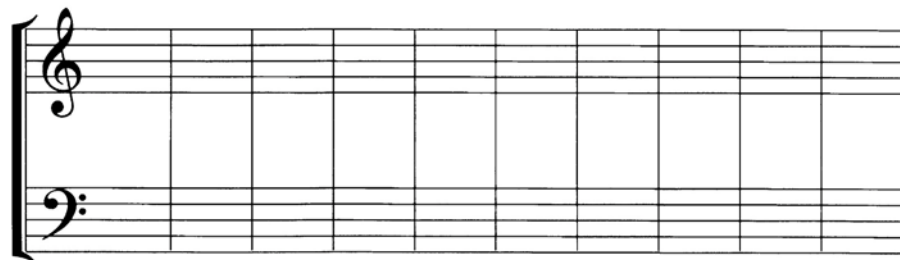
5. 

5-7

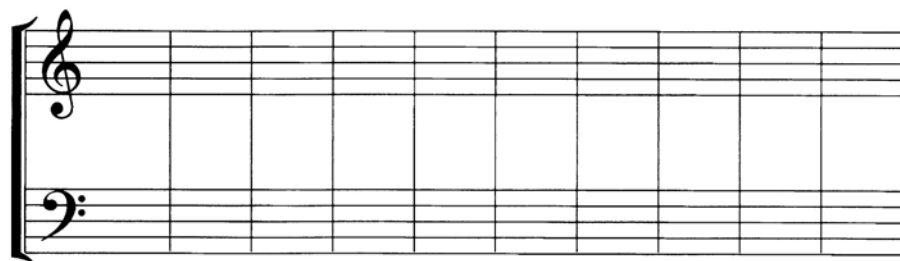
Write each indicated pitch in the correct octave. The octave sign may be used where necessary.

1. 

F<sup>4</sup> A<sup>3</sup> B<sup>3</sup> G<sup>4</sup> D<sup>4</sup> C<sup>3</sup> E<sup>4</sup> F<sup>3</sup> B<sup>4</sup> D<sup>3</sup>

2. 

C<sup>4</sup> G<sup>3</sup> D<sup>4</sup> F<sup>5</sup> G<sup>4</sup> A<sup>3</sup> B<sup>2</sup> D<sup>5</sup> A<sup>1</sup> E<sup>3</sup>

3. 

A<sup>2</sup> D<sup>6</sup> F<sup>5</sup> B<sup>3</sup> C<sup>1</sup> E<sup>4</sup> G<sup>5</sup> A<sup>3</sup> F<sup>4</sup> D<sup>2</sup>